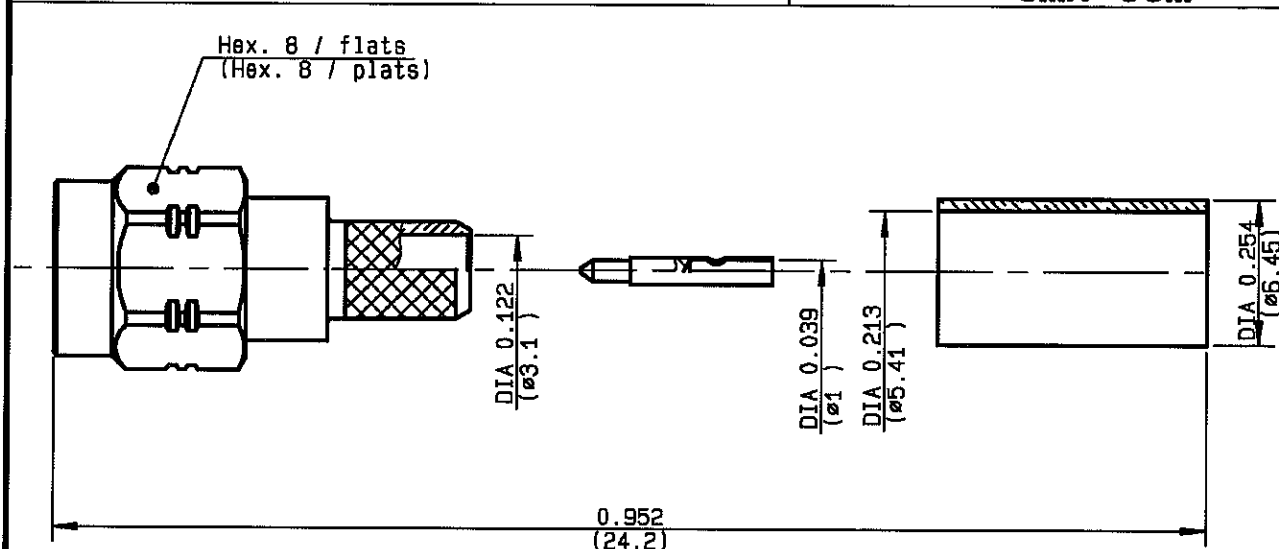


**STRAIGHT PLUG CRIMP TYPE  
CABLE 5/50 S**

**R124.075.123**  
**SERIES SMA-COM**



NOMINAL IMPEDANCE	<b>50</b> Ω	CABLES : <b>KX 15</b> <b>RG 141</b> <b>RG 58</b>
FREQUENCY RANGE	<b>0-12.4</b> GHz	
TEMPERATURE RATING	<b>-65/+165</b> °C	
V.S.W.R	<b>1.15 + .01 x F(GHz)Maxi</b>	
RF INSERTION LOSS	<b>0.05 √F(GHz) dB Maxi</b>	
VOLTAGE RATING	<b>335</b> V <sub>eff</sub> Maxi	
DIELECTRIC WITHSTANDING VOLTAGE	<b>1000</b> V <sub>eff</sub> Mini	
INSULATION RESISTANCE	<b>5000</b> MΩMini	
HERMETIC SEAL	<b>NA</b> Atm.cm <sup>3</sup> /s	
LEAKAGE (pressurized only)	<b>NA</b>	
MECHANICAL DURABILITY	<b>100</b> Cycles	OTHERS CHARACTERISTICS
WEIGHT	<b>4.2</b> gr	CABLE RETENTION <b>180</b> N Mini
SPECIFICATION		CENTER CONTACT RETENTION
		Axial force - mating end <b>NA</b> N Mini
		Axial force - opposite end <b>NA</b> N Mini
		Torque <b>NA</b> cm.N Mini
		RECOMMENDED TORQUES
		Mating <b>60</b> cm.N
		Panel nut <b>NA</b> cm.N
		Clamp nut <b>NA</b> cm.N

CONNECTOR PARTS	MATERIALS	FINISH (all values are given in micrometers)
BODY	BRASS	GOLD 0.2 OVER NICKEL 2
OUTER CONTACT		
CENTER CONTACT	BRASS	GOLD 1.3 OVER COPPER 2.5
INSULATOR	PTFE	-
GASKET		-
OTHERS PIECES	BRASS	GOLD 0.2 OVER NICKEL 2

ISSUE <b>0708D</b>	CREATION DATE <b>30/06/1993</b>	FILE PART-NUMBER <b>EPC 97-03</b>		<b>RADIALL®</b>
-----------------------	------------------------------------	--------------------------------------	--	-----------------

TRIGUES E.

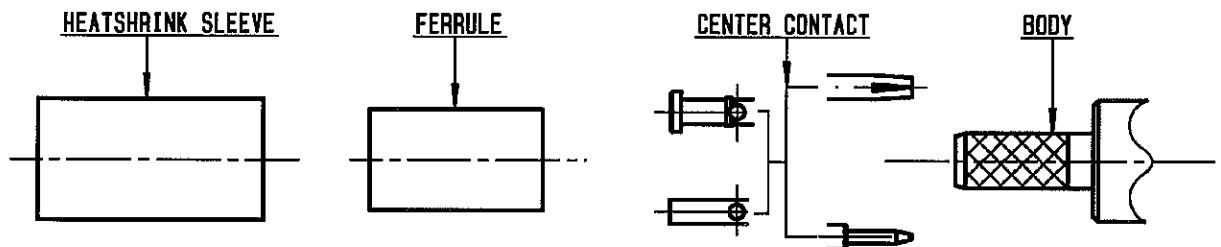
The information given here is subject to change without notice.  
Design changes may be in order to improve the product.

*Connect to the future*



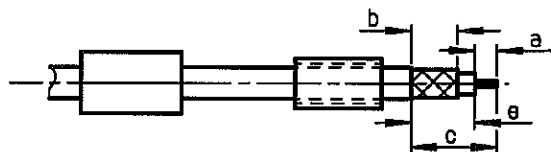
**R124.075.123**

ISSUE **0708D** SERIES **SMA-COM**



①

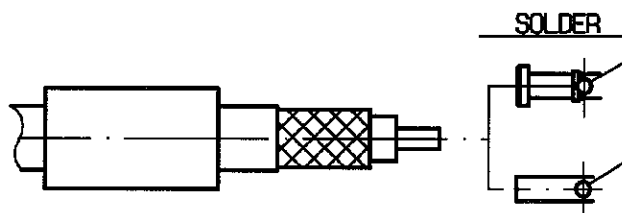
Slide heatshrink sleeve (R280.637.030-Option) and ferrule onto cable. Strip the cable.



Stripping	a	b	c	d	e
inch	0.138	0.276	0.531	0	0.394
mm	3.5	7	13.5		10

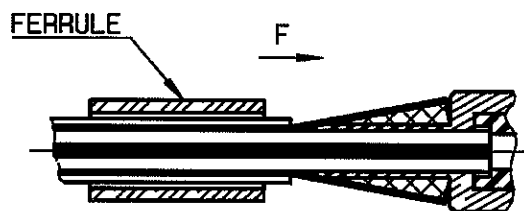
②

Slide center contact on until it bottoms against cable dielectric. Solder center contact.



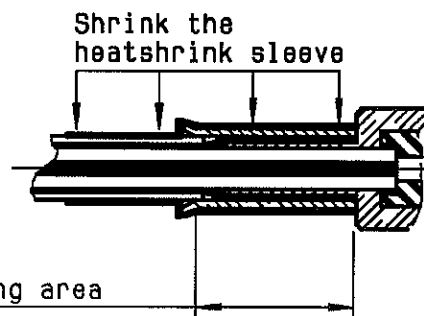
③

Fan the braid. Slide cable into the body by overtaking the insulator hard mounting point. Slide ferrule over the braid. (In direction F)



④

Crimp the ferrule with crimping tool R282.223.000 (Hex. : .213 ) (5.41) or crimping tool R282.293.000 ( M22520/5-01 ) + dies R282.235.011 ( M22520/5-11 ) Cut excess of braid if necessary. Slide sleeve over ferrule and heatshrink in place (Option)



TRIQUES E.